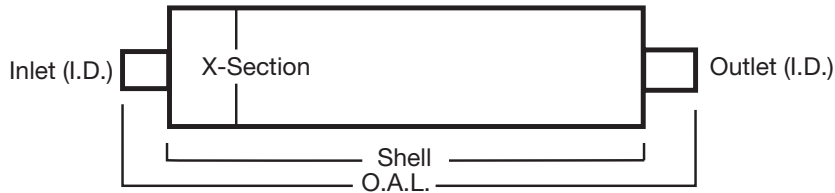


# TRUCK MUFFLER SPECIFICATIONS

## Arc Welded & Heavy Duty Mufflers, 2" & Larger Inlet Diameters

### STYLE 1 - CENTER TO CENTER



Inlet ID	Part No.	Cross Section	Shell Length	Overall Length	Outlet ID
2½	22635	6	20	26	2½
2½	22356	6	30	38	2½
2½ OD	22577	8½	22	28	2¼
2½	21163	6	24	30	2½
2¾	21925	6	26½	39½	2½
3d	22630	7	14	19¾	3‡
3	21468	6	21	30	3
3	21138	6	26	36½	3
3	21146	7	12	20	3
3	22389	7	30	38	3
3½‡	22764	7½	15	19¾	3½‡
3½	21470	7	30	38	3½
3½	22844	9	45	51	3½
3½	21467	7	12	20	3½
4	21471	7	27¼	36	4
4	22810	7	40	48	4
4‡	22631	9	20	26	4‡
4	21838	8¾	33½	40	4
4	22572	9	20	27	4
4	22571	9	28	34½	4
4	22936	9	44	51	4
4	22970★	9	44	51	5

Inlet ID	Part No.	Cross Section	Shell Length	Overall Length	Outlet ID
4	22941	9	44½	51	5
4	22969★	10	44	51	4
4	22916	10	45	51½	4
4	22962	10	44	51	5
4	21464	7	12	20	4
4	21172	9	15	22	4
4	22965★	9	44	51	4
4	22966★	10	44	51	5
5	22771	9	19	26	5
5	22914	9	33½	40	5
5	22940	9	44½	51	5
5	22920	10	44	51	5
5	21835	9	12	20	5
5	22963★	10	44	51	5
5	22964★	9	44	51	5
5	22980#	10	44	51	5
5	22981#	10	44	51	5
5	22811	10	44	51	6
5	22993★	10	44	51	6

† Double Wrapped  
‡ Threaded  
@ Stainless

★ Mega Flow Muffler  
# Noise Braker Muffler  
SP Spout

WS Welded Spout

ACCESSORIES

TECH-FIT

HEAVY DUTY TRUCK  
GW 7-8

APPLICATION BY ENGINE

MEDIUM DUTY TRUCK  
GW 3-6

SCHOOL BUS

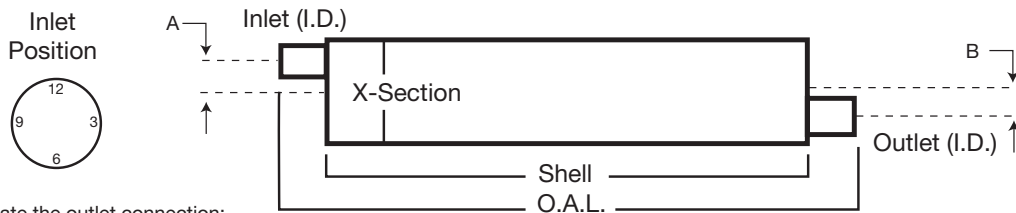
AGRICULTURAL

MUFFLER SPECS

O.E. CROSS REFERENCE

# TRUCK MUFFLER SPECIFICATIONS

## STYLE 2 - OFFSET TO OFFSET



To locate the outlet connection:  
View muffler from inlet end with inlet connection near 12 o'clock. Outlet will be located clockwise from inlet per chart.

Inlet ID	Part No.	Cross Section	Shell Length	Overall Length	Outlet ID	"A" Inlet Offset	"B" Outlet Offset	Inlet Position	Outlet Position
1 $\frac{1}{8}$	21849	6	10 $\frac{1}{4}$	14 $\frac{3}{8}$	1 $\frac{3}{4}$	1 $\frac{1}{2}$	1 $\frac{1}{2}$	12	8
2	21169	6	22 $\frac{1}{2}$	29	2	1 $\frac{3}{8}$	1 $\frac{3}{8}$	12	6
2 $\frac{1}{4}$	22382	6	24	30	2 $\frac{1}{4}$	1 $\frac{3}{8}$	1 $\frac{3}{8}$	12	6
2 $\frac{1}{4}$	22581	6	19	26	2	1 $\frac{3}{8}$	1 $\frac{3}{8}$	12	6
2 $\frac{1}{4}$	22177	7	27	37	2 $\frac{1}{2}$	2 $\frac{3}{8}$	2 $\frac{3}{8}$	12	8
2 $\frac{1}{2}$	22730	4 $\frac{1}{8}$ x 9	19	26	2 OD	2 $\frac{7}{8}$	2 $\frac{7}{8}$	12	6
2 $\frac{1}{2}$	22731	4 $\frac{1}{8}$ x 9	19	26	2 $\frac{1}{4}$ OD	2 $\frac{7}{8}$	2 $\frac{7}{8}$	12	6
2 $\frac{1}{2}$	21151	6 $\frac{1}{2}$	23	27 $\frac{3}{4}$	2 $\frac{1}{4}$	1 $\frac{1}{2}$	1 $\frac{1}{2}$	12	6
2 $\frac{1}{2}$	22583	6 $\frac{1}{2}$	26	33	2 $\frac{1}{4}$	1 $\frac{1}{2}$	1 $\frac{1}{2}$	12	6
2 $\frac{1}{2}$	22003	8 $\frac{3}{8}$	26 $\frac{1}{2}$	32 $\frac{1}{2}$	2 $\frac{1}{2}$	2 $\frac{1}{2}$	2 $\frac{1}{2}$	12	6
2 $\frac{1}{2}$	21475	6 $\frac{1}{2}$	26	35	2 $\frac{1}{2}$	1 $\frac{1}{2}$	1 $\frac{1}{2}$	12	6
2 $\frac{3}{4}$	21152	7	29 $\frac{3}{4}$	36 $\frac{1}{4}$	2 $\frac{1}{4}$	1 $\frac{5}{8}$	1 $\frac{5}{8}$	12	6
2 $\frac{3}{4}$	22852	7	33 $\frac{1}{2}$	40	2 $\frac{3}{4}$	1 $\frac{5}{8}$	1 $\frac{5}{8}$	12	6
3	22636	8 $\frac{3}{8}$	21	27	3	2	2	12	6
3	21476	8 $\frac{3}{8}$	29 $\frac{3}{4}$	36 $\frac{1}{4}$	3	2	2	12	6
3 $\frac{1}{2}$	22808	8 $\frac{3}{8}$	36 $\frac{1}{2}$	43	3	1 $\frac{3}{4}$	2	12	6
3 $\frac{1}{2}$	22632	8 $\frac{1}{4}$ x 11 $\frac{1}{2}$	26	32	3 $\frac{1}{2}$	2 $\frac{3}{4}$	2 $\frac{1}{2}$	12	6
3 $\frac{1}{2}$	21832	8 $\frac{1}{4}$ x 11 $\frac{1}{2}$	26	32	4	2 $\frac{3}{4}$	2 $\frac{1}{2}$	12	6
3 $\frac{1}{2}$	22551	8 $\frac{1}{4}$ x 11 $\frac{1}{2}$	30	36	4	2 $\frac{3}{4}$	2 $\frac{1}{2}$	12	6
4	22004	8 $\frac{1}{4}$ x 11 $\frac{1}{2}$	27	33	4	2 $\frac{1}{2}$	2 $\frac{1}{2}$	12	6
4	22449	8 $\frac{1}{4}$ x 11 $\frac{1}{2}$	31 $\frac{1}{2}$	37 $\frac{1}{2}$	4	2 $\frac{1}{2}$	2 $\frac{1}{2}$	12	6
4	21174	10 x 15	26	32 $\frac{1}{2}$	4	4 $\frac{7}{16}$	4 $\frac{7}{16}$	12	6
4	22802	11	36	44	4	2 $\frac{1}{2}$	2 $\frac{1}{2}$	12	6
4	22995	11	36	42	4	2 $\frac{1}{2}$	2 $\frac{1}{2}$	12	6
4	22789	11 $\frac{1}{8}$	30	36	4	2 $\frac{1}{2}$	2 $\frac{1}{2}$	12	6
4	22888	11 $\frac{1}{8}$	36	42	4	2 $\frac{1}{2}$	2 $\frac{1}{2}$	12	6
4	22899	11 $\frac{1}{8}$	36	42	4	2 $\frac{1}{2}$	2 $\frac{1}{2}$	12	6
4	22960	9	44	51	4	1 $\frac{15}{16}$	1 $\frac{15}{16}$	12	6
4	21833	10	30	36	4	2 $\frac{7}{16}$	2 $\frac{7}{16}$	12	6
5	22552	10 x 15	26	32 $\frac{1}{2}$	5	3 $\frac{1}{8}$	3 $\frac{7}{32}$	12	6
5	22833	10 x 15	36	42	5	3 $\frac{3}{4}$	3 $\frac{3}{4}$	12	6
6	22907	10 x 15	32	42 $\frac{1}{2}$	6	3 $\frac{5}{8}$	3 $\frac{5}{8}$	12	6

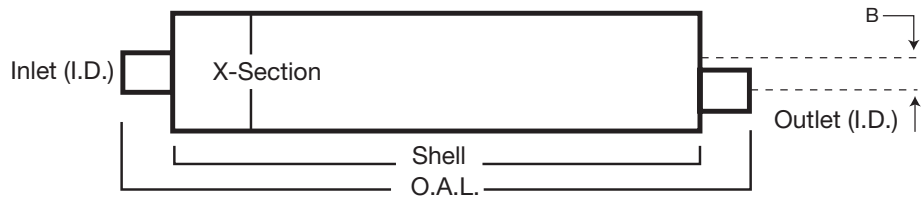
† Double Wrapped  
‡ Threaded  
@ Stainless  
222

★ Mega Flow Muffler  
# Noise Braker Muffler  
SP Spout

WS Welded Spout

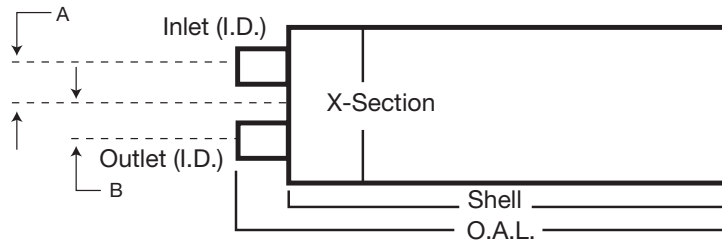
# TRUCK MUFFLER SPECIFICATIONS

## STYLE 3 - CENTER TO OFFSET



Inlet ID	Part No.	Cross Section	Shell Length	Overall Length	Outlet ID	Inlet Offset	"B" Outlet Offset
4	22835†	10½	44½	51	4	—	2⅞

## STYLE 4 - INLET/OUTLET SAME END



Inlet ID	Part No.	Cross Section	Shell Length	Overall Length	Outlet ID	"A" Inlet Offset	"B" Outlet Offset
3	22637	8⅞	22	23½	3	2	2
3½	21436	8¼ x 11½	32	32½	4 OD	2½	2½
4	21137	10	27¾	32	4	2⅞	2⅞
4	21175	10 x 15	36	39½	4	¼	4½
5	22381	10 x 15	25	29	5	3	3
5	22971	10 x 15	44	47	5	3⅞	3⅞

† Double Wrapped  
‡ Threaded  
@ Stainless

★ Mega Flow Muffler  
# Noise Braker Muffler  
SP Spout

WS Welded Spout

ACCESSORIES

TECH-FIT

HEAVY DUTY TRUCK  
GW 7-8

APPLICATION BY ENGINE

MEDIUM DUTY TRUCK  
GW 3-6

SCHOOL BUS

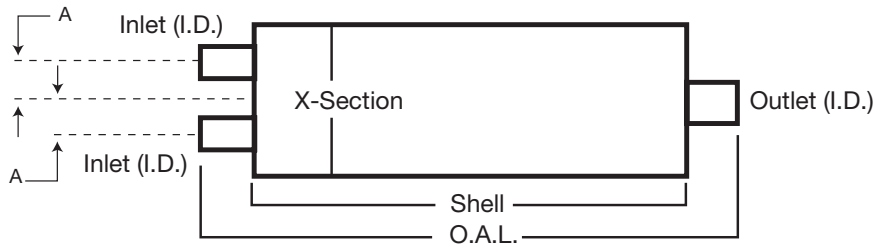
AGRICULTURAL

MUFFLER SPECS

O.E. CROSS REFERENCE

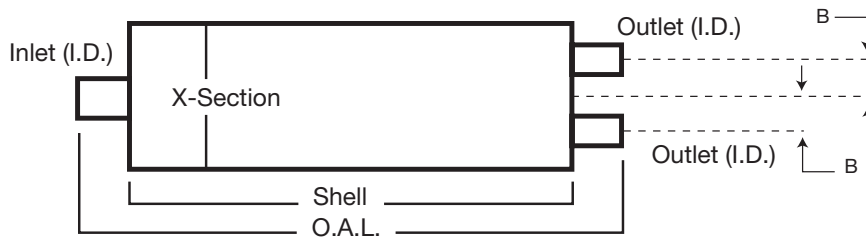
# TRUCK MUFFLER SPECIFICATIONS

## STYLE 5 - DUAL INLET TO SINGLE OUTLET



Inlet ID	Part No.	Cross Section	Shell Length	Overall Length	Outlet ID	"A" Inlet Offset	"A" Inlet Offset
2½ - 2½	<b>21260</b>	7	28	34½	2½	1⅞-1⅞	1⅞
2½ - 2½	<b>22866</b>	8⅞	29½	38	2¾	1¾-1¾	2
2½ - 2½	<b>22865</b>	8⅞	29¾	36¼	3 OD	1⅝-1⅝	2
2½ - 2½	<b>22822</b>	8⅞	35½	43	3	1⅝-1⅝	2
2½ - 2½	<b>22932</b>	8⅞	30	40½	3½ OD	1⅝-1⅝	2
2¾ - 2¾	<b>22231</b>	8¼ x 11½	27¾	32¾	4	0-3¾	2

## STYLE 6 - SINGLE INLET TO DUAL OUTLET



Inlet ID	Part No.	Cross Section	Shell Length	Overall Length	Outlet ID	Inlet Offset	"B" Outlet Offset
2½	<b>22732</b>	4⅞ x 9	19	26	2-2	—	2⅞-2⅞

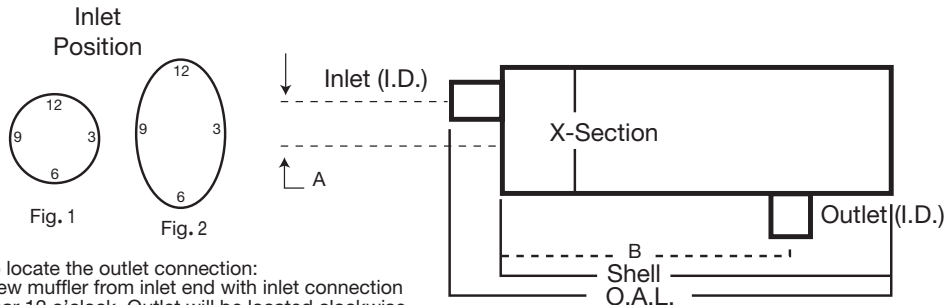
† Double Wrapped  
‡ Threaded  
@ Stainless

★ Mega Flow Muffler  
# Noise Braker Muffler  
SP Spout

WS Welded Spout

# TRUCK MUFFLER SPECIFICATIONS

STYLE 9



To locate the outlet connection:  
View muffler from inlet end with inlet connection near 12 o'clock. Outlet will be located clockwise from inlet per chart.

Inlet ID	Part No.	Cross Section	Shell Length	Overall Length	Outlet ID	"A" Inlet Offset	"B" Outlet Offset	Fig.	Inlet Position	Outlet Position
3½	<b>22391</b>	8¼ x 11½	28	31	4 OD	2½	12	2	12	4
3½	<b>22214</b>	8¼ x 11½	26	30	4	2½	14¾	2	12	10
3½	<b>21074</b>	8¼ x 11½	31½	34¾	4 OD	2½	7⅞	2	12	4
3½	<b>21073</b>	8¼ x 11½	32	34¾	4 OD	2½	21¼	2	12	4
3½	<b>22604</b>	8¼ x 11½	32	35	4	2½	11⅞	2	12	10
3½	<b>21168</b>	8¼ x 11½	32	35	4 OD	2½	14⅝	2	12	4
4	<b>21969</b>	10	28	31½	4	2½	20½	1	12	5
4	<b>22664</b>	11	36	39	4	1½	7½	1	12	6
4	<b>22668</b>	11	36	39	4	2½	3⅞	1	12	1
4	<b>22669</b>	11	36	38⅞	4	2½	4⅞	1	12	10
4	<b>22006</b>	8¼ x 11½	28	31	4	2½	12	2	12	8
4	<b>22555</b>	10 x 15	36	39	4	¾	7½	2	12	6
4 OD	<b>22999</b>	11	36	41	4	2½	18	1	9	3
5	<b>22337</b>	10 x 15	35½	38½	5	¾	7½	2	12	6
5	<b>21165</b>	11	36	39	5	2½	7½	1	12	6

† Double Wrapped  
‡ Threaded  
@ Stainless

★ Mega Flow Muffler  
# Noise Braker Muffler  
SP Spout

WS Welded Spout

ACCESSORIES

TECH-FIT

HEAVY DUTY TRUCK  
GWW 7-8

APPLICATION BY ENGINE

MEDIUM DUTY TRUCK  
GWW 3-6

SCHOOL BUS

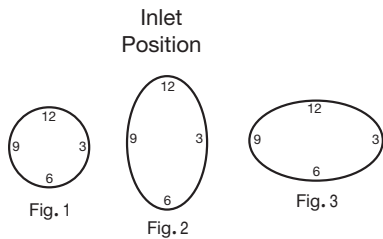
AGRICULTURAL

MUFFLER SPECS

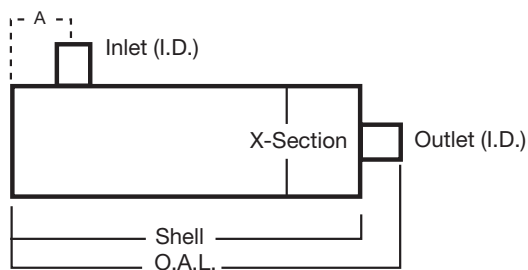
O.E. CROSS REFERENCE

# TRUCK MUFFLER SPECIFICATIONS

## STYLE 10

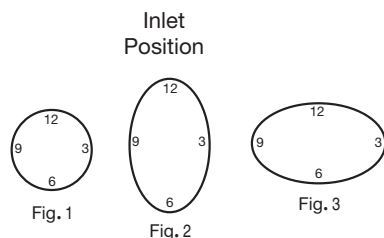


To locate the outlet connection:  
View muffler from inlet end with inlet connection near 12 o'clock. Outlet will be located clockwise from inlet per chart.

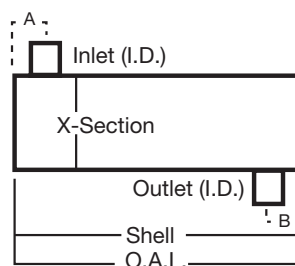


Inlet ID	Part No.	Cross Section	Shell Length	Overall Length	Outlet ID	"A" Inlet Offset	Outlet Offset	Fig.	Inlet Position	Outlet Position
1½	22769	4¼	12¾	15	1½	2¼	—	1	—	—
2½	22770	6⅝	20¾	23½	2½	3½	1⅝	1	12	3
3	22767	8½	26	29	3	4½	2	1	12	3
4	22948	9	44⅝	48	5	3⅞	—	1	12	—
4	22634	10	28	32¼	4	4½	2¼	1	12	3
4	22958	11	36	40	4	3⅞	2⅝	1	12	3
4	22643	11⅝	36	39	4	4¼	2½	1	12	3
4	22570	8¼ x 11½	16¼	21¼	4	¾	2½	2	12	6
4	21161	10 x 15	21⅝	25¼	5	10⅝	4¼	2	12	12
5	22915	10	44	48	5	6	—	1	12	—
5	22917	10 x 15	36	40	5	6⅝	3⅝	3	12	3

## STYLE 13



To locate the outlet connection:  
View muffler from inlet end with inlet connection near 12 o'clock. Outlet will be located clockwise from inlet per chart.



Inlet ID	Part No.	Cross Section	Shell Length	Overall Length	Outlet ID	"A" Inlet Offset	"B" Inlet Offset	Fig.	Inlet Position	Outlet Position
4	22775	10⅝	28	28	4	4½	9	1	12	6
4	22642	11⅝	36	36	4	4¼	6¾	1	12	9
4	21069	11⅝	36	36	4	4¼	22½	1	12	2

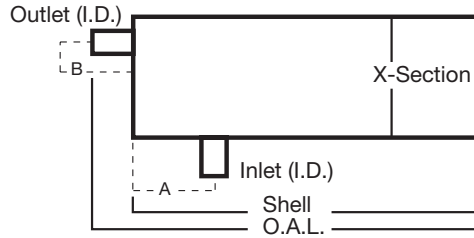
† Double Wrapped  
‡ Threaded  
@ Stainless

★ Mega Flow Muffler  
# Noise Braker Muffler  
SP Spout

WS Welded Spout

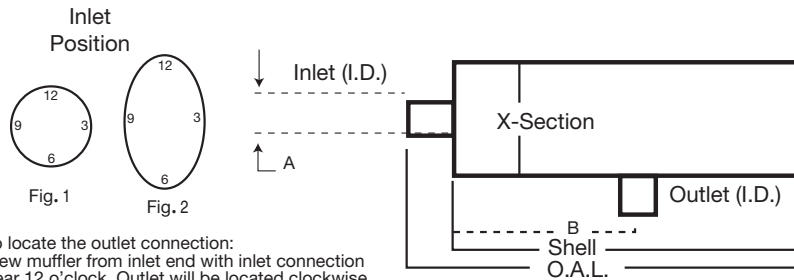
# TRUCK MUFFLER SPECIFICATIONS

## STYLE 23



Inlet ID	Part No.	Cross Section	Shell Length	Overall Length	Outlet ID	"A" Inlet Offset	"B" Outlet Offset
4	<b>21071</b>	8¼ x 11½	28½	31	4	5¼	2½
4	<b>21627</b>	10 x 15	27	29¾	5	4¾	3⅝
5	<b>21070</b>	10 x 15	27	29¾	5	4⅝	3⅝

## STYLE 24 - CENTER TO SIDE OUTLET



To locate the outlet connection:  
View muffler from inlet end with inlet connection near 12 o'clock. Outlet will be located clockwise from inlet per chart.

Inlet ID	Part No.	Cross Section	Shell Length	Overall Length	Outlet ID	"A" Inlet Offset	"B" Outlet Offset	Fig.	Inlet Position	Outlet Position
4	<b>22994</b>	11	36	38	4	—	12	1	12	6
4 OD	<b>22998</b>	11	36	42	5 OD	—	16	1	9	6
5 OD	<b>22950</b>	12	36	40	5 OD	—	21½	1	12	6

† Double Wrapped  
‡ Threaded  
@ Stainless

★ Mega Flow Muffler  
# Noise Braker Muffler  
SP Spout

WS Welded Spout

ACCESSORIES

TECH-FIT

HEAVY DUTY TRUCK  
GW 7-8

APPLICATION BY ENGINE

MEDIUM DUTY TRUCK  
GW 3-6

SCHOOL BUS

AGRICULTURAL

MUFFLER SPECS

O.E. CROSS REFERENCE