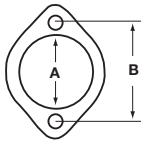


ACCESSORIES

GASKET IDENTIFICATION CHARTS

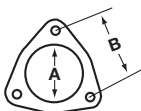
Figure 1



Gasket No.	A	B
31301	2 1/8	2 7/8
31307†	2 1/4	3 1/2
31309	1 7/8	3
31310	2	3 1/2
31311	2 7/16	3 29/32
31313	2 1/16	3 3/8
31335	2	2 23/32
31336†	2 1/8	3 1/2*
31337	2 1/2	4
31356	1 1/2	2 13/16
31367†	2	3 3/16
31386	2 1/4	3 1/2*
31388	2	3 1 1/32
31512	2 5/8	4 1/4
31532	2 3/8	4 5/16
31534	2 1/8	3 5/8
31537	2 3/8	3 5/8
31540	2 15/32	4 1/8
31547	2 7/16	3 17/32
31560	2 1/16	4 5/16
31564	3/4	1 1/2*
31574	3 1/32	5 5/32
31578	2 25/64	4 9/64
31605	2 13/16	5 5/32
31632	2 1/8	4
31640	2 41/64	4 1/16
31652	2 5/8	4 15/16
31671	1 5/8	2 7/8
31676	1	2 1/8

† Shipped in lots of 10 - Std. Carton.
* Slotted Bolt Holes

Figure 2



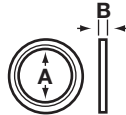
Gasket No.	A	B
31305	2 9/32	2 3/4
31312	2 7/16	2 3/4
31327	1 7/8	2 5/8
31342	2 1/4	2 1/2
31348	2 15/32	3 1/32
31366	2 1/8	2 5/8
31369†	2 15/32	3 1/4
31383	2 1/8	2 7/8

† Shipped in lots of 10 - Std. Carton.

Figure 2 (Continued)

Gasket No.	A	B
31390	2 1/4	2 7/8
31553	2 3/32	2 7/16
31559	2 1/16	2 13/16
31571	2 13/16	4 7/16
31582	2	2 3/8
31589	2 19/32	3 13/32
31595	2 3/32	3 5/64
31599	2 9/32	3 3/8
31611	2 13/16	3 7/32
31638	3	3 13/16
31641	2	4
31650	2 7/16	3 1/4
31711	2 1/2	3
31723	5	5 1/4
31726	2 7/8	3 9/16
31727	2 7/8	3 5/8
31728	2 1/4	3 13/32
31737	2 19/32	3 39/64
36491	4	5 1/4
36496	4 1/2	5 1/4

Figure 3



Gasket No.	A	B
31320†	1 25/32	3/16
31321	1 17/32	3/16
31322	2 1/2	1/16
31331	2	1/8
31332	1 31/32	3/16
31334	1 7/8	—
31350	2 5/8	3/16
31354	2 1/8	5/32
31355	2 13/32	7/32
31374	2 3/16	3/16
31377	2 1/64	3/16
31384	2 9/16	3/32
31396	1 11/16	3/16
31397	1 51/64	3/16
31541	1 1/2	3/16
31549	2 3/4	7/32
31566	2 1/16	3/16
31568	1 23/32	3/16
31576	2 5/32	5/32
31577	1 23/32	3/16
31585	2 13/32	3/16
31586	1 59/64	3/16
31602	2 13/16	5/32
31734	3 1/4	3/16

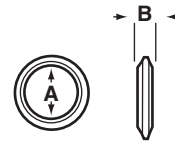
† Shipped in lots of 10 - Std. Carton.

Figure 3 (Continued)

Gasket No.	A	B
31610	2 31/32	5/32
31612	2 37/64	5/32
31616	2 5/8	3/16
31628	2 3/16	3/16
31629	2 31/32	3/16
31631	2 7/16	3/8
31633	2 9/32	3/16
31634	3	3/16
31639	2 3/8	1/2
31656	1 7/16	3/16
31670	2 1/2	1/16
31696	5	3/16
31703	3	3/16

† Shipped in lots of 10 - Std. Carton.

Figure 4



Gasket No.	A	B
31365 ¹	1 25/32	9/16
31370 ¹	2 9/32	9/16
31385 [#]	1 3/4	1
31392	1 13/16	3/4
31400†	2 1/32	1 9/32
31401	1 29/32	9/16
31403	1 25/32	1 9/32
31405†	2 1/4	9/16
31416 ¹	2 1/32	1 7/32
31500	2 17/32	2 1/32
31503	2 1/8	3/4
31508 ¹	2 9/16	1/2
31626	1 25/32	1 3/32
31627	1 15/16	3 7/64
31669	2 1/4	3/4
31684	2	3/4
31738	2 9/32	1 23/64

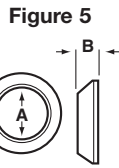
For Spherical Flare Use.

¹ Sintered Iron Material.

⁴ Formed Metal Material.

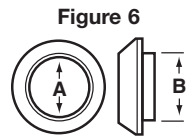
† Shipped in lots of 10 - Std. Carton.

GASKET IDENTIFICATION CHARTS



Gasket No.	A	B
31357 ²	2	1/2
31358 ²	1 3/4	1/2
31360 ²	1 29/32	2 1/32
31362 ³	2 1/32	9/16
31364 ³	2 27/32	9/16
31372 ²	2 5/16	1 1/16
31378 ²	2 1/32	5/8
31379 ³	2 9/32	3/4
31387	1 7/8	1/2
31391	2 1/4	1/2
31417 ¹	2 1/8	1 7/32
31522 ²	1 3/4	1 7/32
31531	2 17/32	3/4
31533	2 1/8	9/16
31550	2	3/4
31555	2 17/32	9/16
31556	3	1 9/32
31557	2 1/4	9/16
31596 ²	2 1/8	5/8
31598	2 9/32	1/2
31600	2 11/32	1 1/16
31604	1 15/16	3/8
31614	1 15/16	1 9/32
31615	2 17/64	4 1/64
31619	2	9/16
31622	2 31/32	1 7/32
31630	2 9/16	4 1/64
31658	2 3/4	1/2
31673	2 5/8	5/8
31687	3 3/8	9/32
31690	1 1/2	1/2
31697	1 3/16	5/8
31709	2	1/2

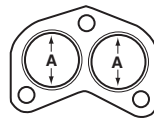
1 Sintered Iron Material.
2 Graphoil Material.
3 Metal Mesh Material.



Gasket No.	A	B
31381 ²	1 29/32	1 7/8
31394	2 1/4	2 1/2
31398	2 1/8	2 3/8
31404	1 27/32	1 29/32
31413	2 11/32	2 19/32
31507	2 1/8	2 5/16
31511 ²	2 11/32	2 19/32
31520 ²	1 3/4	2
31523 ²	2	2 3/16
31524 ²	1 9/16	1 11/16
31554	2 15/32	2 9/16
31657	2 1/2	2 3/4
31654	2 1/4	2 1/2
31657	2 1/2	2 3/4

1 Sintered Iron Material.
2 Graphoil Material.

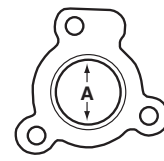
Figure 7



Gasket No.	A
31376	2
31517	1 3/4
31535	1 9/16@
31536	1 23/32
31542	1 9/16
31565	1 23/32
31567	1 45/64
31593	1 7/16
31594	1 13/16
31613	1 27/32
31646	1 27/32
31701	1 3/8

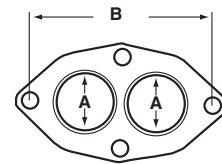
@ Holes are connected..

Figure 8



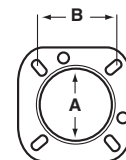
Gasket No.	A
31333	1 13/16
31561	2 1/16
31570	1 7/8

Figure 9



Gasket No.	A	B
31558	1 23/32	4 15/16

Figure 10



Gasket No.	A	B
31347	2 15/16	2 3/4*

* Slotted Bolt Holes.

GENERAL INFORMATION

PASSENGER CAR

LIGHT TRUCK

MUFFLER SPECS.

OPTIONAL MUFFLERS

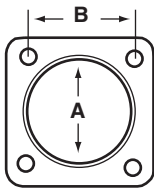
ACCESSORIES

FOOTNOTES

ACCESSORIES

GASKET IDENTIFICATION CHARTS

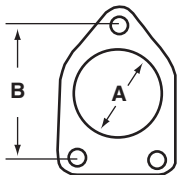
Figure 11



Gasket No.	A	B
31414	2 ⁵ / ₁₆	2 ³ / ₈
31519†	2 ³ / ₄	2 ¹³ / ₁₆
31597	2 ¹⁹ / ₃₂	3 ³ / ₁₆
31649	2 ¹ / ₈	2 ³ / ₄
31662	2 ¹ / ₂	2 ⁵ / ₈
31698	3 ³ / ₁₆	3 ³ / ₁₆

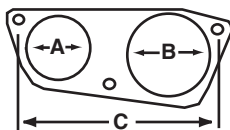
† Shipped in lots of 10 - Std. Carton.

Figure 12



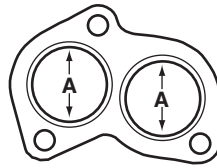
Gasket No.	A	B
31371	2	3
31528	2 ³ / ₁₆	3 ³ / ₁₆
31592	2 ²¹ / ₃₂	3 ²¹ / ₃₂
31644	2 ¹ / ₂	4
31645	2	3 ¹ / ₄
31650	2 ⁷ / ₁₆	3 ¹ / ₄
31688	2 ¹ / ₄	3

Figure 13



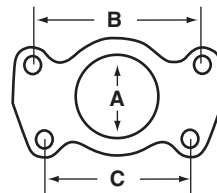
Gasket No.	A	B	C
31618	3 ¹ / ₈	3 ⁵ / ₈	9 ⁷ / ₈

Figure 14



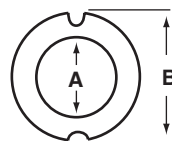
Gasket No.	A
31314	1 ¹³ / ₁₆
31395	2

Figure 15



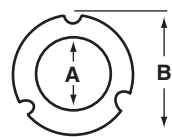
Gasket No.	A	B	C
31606	2	4 ⁵ / ₁₆	3 ¹¹ / ₁₆

Figure 16



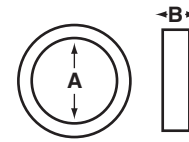
Gasket No.	A	B
31373	2 ⁵ / ₃₂	3 ¹³ / ₁₆

Figure 17



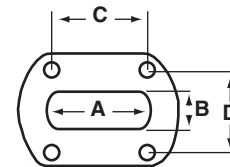
Gasket No.	A	B
31526	2 ⁹ / ₁₆	4 ⁷ / ₃₂

Figure 18



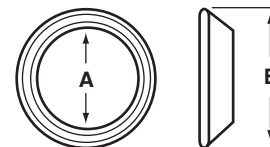
Gasket No.	A	B
31399	2 ⁵ / ₃₂	5 ⁵ / ₈
31527	1 ³¹ / ₃₂	5 ⁵ / ₈

Figure 19



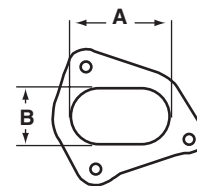
Gasket No.	A	B	C	D
31530	5 ¹ / ₂	2 ¹ / ₄	3 ¹ / ₄	4 ³ / ₁₆
31624	3 ⁹ / ₁₆	2 ¹ / ₂	4 ⁵ / ₈	2 ⁵ / ₈
31724	2 ²¹ / ₆₄	1 ¹³ / ₁₆	2 ³ / ₈	2 ¹ / ₂

Figure 20



Gasket No.	A	B
31543	1 ⁹ / ₁₆	2 ⁵ / ₈

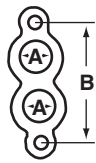
Figure 21



Gasket No.	A	B
31545	3 ¹⁵ / ₃₂	2 ⁷ / ₁₆

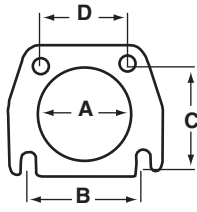
GASKET IDENTIFICATION CHARTS

Figure 22



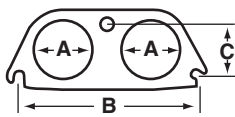
Gasket No.	A	B
31548	1 ⁵ / ₁₆	3 ¹⁵ / ₁₆

Figure 23



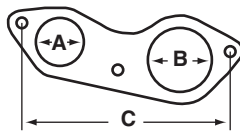
Gasket No.	A	B	C	D
31546	2 ²¹ / ₃₂	3 ³ / ₁₆	2 ⁹ / ₁₆	2 ⁷ / ₁₆
31601	2	2 ¹¹ / ₁₆	2 ¹¹ / ₁₆	1 ⁶³ / ₆₄

Figure 24



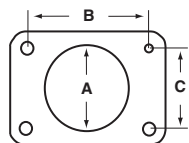
Gasket No.	A	B	C
31573	2 ⁹ / ₁₆	8 ³ / ₄	2 ⁹ / ₁₆

Figure 25



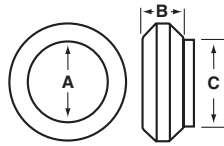
Gasket No.	A	B	C
31575	2 ⁹ / ₁₆	2 ³ / ₄	9 ³ / ₁₆

Figure 26



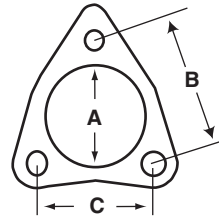
Gasket No.	A	B	C
31587	3 ³ / ₃₂	4 ¹⁵ / ₃₂	2 ²⁹ / ₃₂
31591	3 ¹ / ₂	4 ³ / ₄	3 ⁷ / ₃₂
31648	2 ¹ / ₂	3	2
31694	3	4 ³ / ₈	1 ¹⁵ / ₁₆

Figure 27



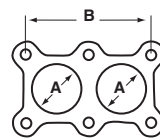
Gasket No.	A	B	C
31588	1 ³ / ₄	1 ⁵ / ₁₆	1 ¹⁵ / ₁₆
31668	2 ¹ / ₄	3 ³ / ₄	2 ¹ / ₂

Figure 28



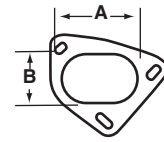
Gasket No.	A	B	C
31590	2 ¹ / ₈	2 ⁷ / ₈	2 ⁷ / ₁₆
31607	2 ³⁵ / ₆₄	4 ⁵⁹ / ₆₄	4 ³¹ / ₆₄
31620	2 ³ / ₄	5 ¹ / ₁₆	3 ¹ / ₁₆
31647	2 ³ / ₄	4 ³ / ₁₆	3 ⁴¹ / ₆₄
31686	2 ³ / ₈	3 ³ / ₈	4 ¹ / ₈
31688	2 ¹ / ₄	3	2 ³ / ₄
31718	2 ³ / ₄	4 ¹ / ₈	3
31721	2 ³ / ₄	4 ⁷ / ₈	2 ⁷ / ₈
31731	2 ¹ / ₄	3 ¹ / ₈	2 ¹ / ₈

Figure 29



Gasket No.	A	B
31603	2 ³ / ₃₂	5
31719	3 ¹ / ₈	6 ¹ / ₄

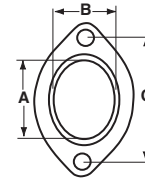
Figure 31



Gasket No.	A	B
31609*	3 ¹⁵ / ₃₂	2 ⁷ / ₁₆

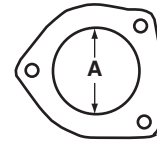
* Slotted bolt holes.

Figure 32



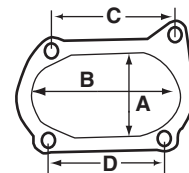
Gasket No.	A	B	C
31623	2 ⁵⁵ / ₆₄	2 ⁵ / ₃₂	4 ¹⁵ / ₁₆
31692	2 ⁷ / ₈	2 ³ / ₈	4 ¹ / ₂

Figure 33



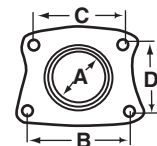
Gasket No.	A
31625	2 ⁹ / ₁₆
31702	2 ¹ / ₈
31708	2 ¹¹ / ₁₆

Figure 34



Gasket No.	A	B	C	D
31617	4 ¹⁵ / ₃₂	2 ⁴¹ / ₆₄	3 ³ / ₄	3 ⁹ / ₁₆

Figure 35



Gasket No.	A	B	C	D
31635	2 ²¹ / ₃₂	4 ⁵ / ₃₂	3 ²¹ / ₃₂	2 ²³ / ₃₂

GENERAL INFORMATION

PASSENGER CAR

LIGHT TRUCK

MUFFLER SPECS.

OPTIONAL MUFFLERS

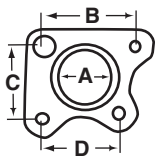
ACCESSORIES

FOOTNOTES

ACCESSORIES

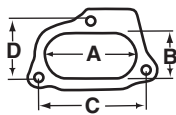
GASKET IDENTIFICATION CHARTS

Figure 36



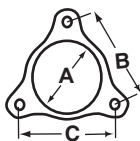
Gasket No.	A	B	C	D
31636	2 ¹ / ₃₂	3 ¹ / ₁₆	2 ¹ / ₂	2 ¹³ / ₃₂

Figure 37



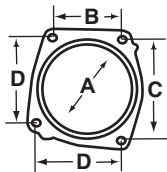
Gasket No.	A	B	C	D
31637	4 ³ / ₄	2 ³ / ₈	5 ⁹ / ₁₆	2 ¹⁵ / ₁₆

Figure 38



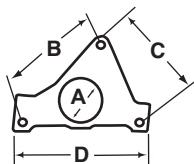
Gasket No.	A	B	C
31643	3 ¹ / ₄	4 ³ / ₈	4 ³ / ₈
31666	3	3	3 ¹ / ₂
31705	2 ¹ / ₄	3 ¹ / ₈	3 ¹ / ₈

Figure 39



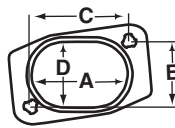
Gasket No.	A	B	C	D
31653	4 ¹ / ₁₆	3 ¹ / ₂	5	4 ¹ / ₄

Figure 40



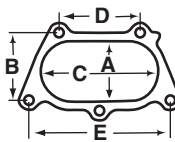
Gasket No.	A	B	C	D
31672	2 ¹ / ₄	6 ¹ / ₈	4	4 ¹ / ₂

Figure 41



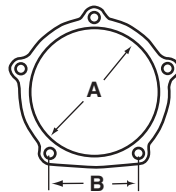
Gasket No.	A	B	C	D
31659	2 ²⁵ / ₃₂	6 ²⁹ / ₃₂	2 ²⁷ / ₃₂	1 ⁷ / ₈

Figure 42



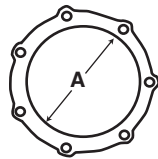
Gasket No.	A	B	C	D	E
31681	2 ¹¹ / ₃₂	2 ⁵ / ₈	4 ⁹ / ₁₆	3 ¹ / ₈	5 ¹ / ₂
31732	2 ¹ / ₂	2 ¹ / ₈	4 ¹ / ₁₆	3 ³ / ₄	4 ¹ / ₂

Figure 43



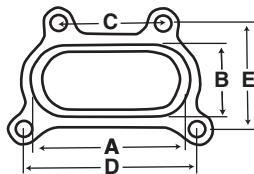
Gasket No.	A	B
31704	4 ⁵ / ₈	3 ¹ / ₈
31720	3	2 ³ / ₄

Figure 44



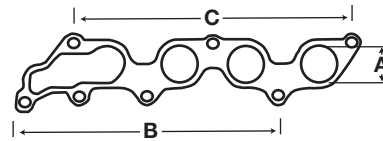
Gasket No.	A
36495	6 ³⁷ / ₆₄

Figure 45



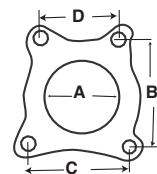
Gasket No.	A	B	C	D	E
31722	3 ¹ / ₂	2 ¹ / ₈	2 ¹ / ₂	4 ¹ / ₈	2 ¹ / ₂

Figure 46



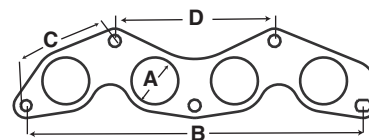
Gasket No.	A	B	C
31725	1 ³ / ₄	12 ¹ / ₄	13 ¹ / ₄

Figure 47



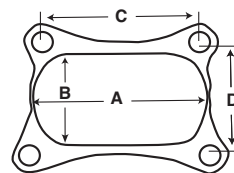
Gasket No.	A	B	C	D
31729	3 ³ / ₈	4 ³ / ₄	4 ¹ / ₂	4 ¹ / ₂

Figure 48



Gasket No.	A	B	C	D
31730	1 ⁷ / ₈	13 ¹ / ₄	2 ¹ / ₄	6 ¹ / ₄

Figure 49



Gasket No.	A	B	C	D
31733	3 ¹ / ₄	2 ¹ / ₈	3 ¹ / ₂	2 ¹ / ₂

ACCESSORIES

FLANGE IDENTIFICATION CHARTS

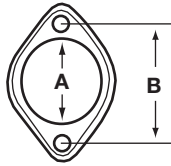


Figure 1

Flange No.	A	B	Type
31800 ⁴	2 ¹ / ₁₆	3	Stamped
31801	2 ⁵ / ₁₆	3 ¹ / ₄	Formed
31802 ¹	2 ¹ / ₈	3 ¹ / ₈	Formed
31805	1 ¹³ / ₁₆	3	Formed
31806	2 ¹ / ₁₆	3 ¹ / ₈	Formed
31807	1 ¹¹ / ₁₆	2 ¹¹ / ₁₆	Stamped
31808 ²	2 ¹ / ₈	3 ¹ / ₈	Stamped
31851 ³	2 ¹ / ₈	3 ¹ / ₈	Formed
31853	2 ³ / ₄	4 ¹ / ₁₆	Formed
31854	2 ¹ / ₄	3 ⁵ / ₈	Formed
31855	2 ¹ / ₂	3 ⁷ / ₈	Formed
31859	2 ¹³ / ₃₂	3 ³ / ₄	Formed
31860	2 ¹ / ₈	3 ¹³ / ₃₂	Formed
31862 ⁶	2 ³ / ₈	3 ¹¹ / ₁₆	Formed
31864	2 ⁵ / ₁₆	3 ⁹ / ₁₆	Formed
31865	2 ¹¹ / ₁₆	3 ³ / ₄	Formed
31867	2 ³ / ₃₂	3 ²⁵ / ₃₂	Formed
31880	2	2 ¹⁹ / ₁₆ ‡	Stamped
31882	2 ⁷ / ₁₆	3 ²⁵ / ₃₂	Formed
31885	2 ⁵ / ₁₆	4	Formed
31886	2 ³ / ₈	4#	Stamped
31887	2 ¹⁹ / ₃₂	3 ³ / ₄	Formed
31890	2 ¹ / ₈	3 ³ / ₄	Formed
31896	2 ⁹ / ₁₆	4	Formed
31897	2 ³ / ₃₂	3 ¹ / ₂ #	Stamped
31899	1 ¹³ / ₁₆	3 ⁵ / ₃₂	Formed
31905	2 ¹ / ₈	4 ¹ / ₄	Formed
31918	2 ¹ / ₈	3 ⁷ / ₁₆	Stamped
31921	2 ¹ / ₁₆	3	Stamped
31926	1 ⁷ / ₈	3	Stamped
31928	2 ²¹ / ₃₂	4 ²⁵ / ₃₂	Formed
31930	2 ³ / ₄	4 ¹ / ₈ #	Stamped
31934	2 ¹ / ₄	3 ¹ / ₂ ‡	Stamped
31937	2 ⁵ / ₃₂	3 ¹ / ₂	Stamped
31942	3 ³ / ₃₂	4 ¹ / ₄	Formed
31943†	2 ⁵ / ₁₆	4 ¹ / ₈	Formed
31944†	2 ¹ / ₂	4 ¹ / ₄	Stamped
31961	2 ³ / ₈	3 ⁷ / ₈	Formed
31964	2 ¹ / ₄	3 ¹ / ₄	Formed

- 1 .12 Material Thickness.
- 2 .38 Material Thickness.
- 3 .15 Material Thickness.
- 4 .45 Material Thickness.

- 6 ⁷/₈" Bolt Holes.
- # Slotted Bolt Holes.
- ‡ Two Slotted Bolt Holes.
- † Individually Boxed.

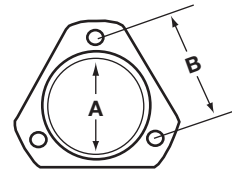


Figure 2

Flange No.	A	B	Type
31803	2 ¹ / ₈	2 ³ / ₄	Formed
31850	2 ³ / ₈	3	Formed
31866	2 ²³ / ₃₂	3 ¹ / ₈	Formed
31875	2 ⁷ / ₁₆	3 ¹¹ / ₁₆	Formed
31877	2	2 ¹³ / ₁₆ #	Stamped
31883	2 ⁵ / ₈	3 ¹ / ₁₆	Formed
31891	2 ¹ / ₈	2 ⁵ / ₈	Stamped
31900	2 ¹ / ₂	3 ¹ / ₈	Stamped
31923	2 ¹¹ / ₁₆	3	Stamped
31927	1 ⁷ / ₈	2 ¹¹ / ₁₆	Formed
31940	2 ¹ / ₄	2 ²³ / ₃₂	Stamped
31952	2 ⁵ / ₈	3 ¹ / ₄	Stamped
31965	2	2 ¹³ / ₁₆ †	Stamped

† Individually Boxed. # Slotted Bolt Holes.

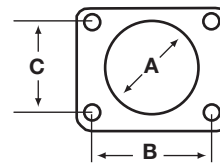


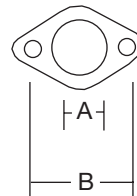
Figure 3

Flange No.	A	B	C	Type
31914	2 ³ / ₈	2 ¹³ / ₁₆ #	2 ¹⁵ / ₃₂	Stamped

Slotted Bolt Holes.

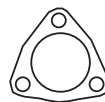
UNIVERSAL FLANGES

Slotted
2 - Bolt Holes
10/carton



Part No.	A	B
31878 -	2 ¹ / ₂ "	4"
31879 -	2 ¹ / ₄ "	4"
31880 -	2"	3 ¹ / ₈ "
31881 -	1 ³ / ₄ "	3 ¹ / ₈ "
31924 -	2 ³ / ₈ "	3 ⁷ / ₈ "
31946 -	2"	3 ³ / ₄ "
31947 -	2 ¹ / ₈ "	3 ¹ / ₂ "

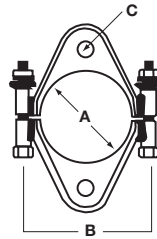
3 - Bolt Holes
10/carton



31876 -	2 ¹ / ₄ " Dia.
31877 -	2" Dia. Slotted
31919 -	2 ¹ / ₂ " Dia.

ACCESSORIES

GENERAL MOTORS UNIVERSAL SPLIT FLANGE



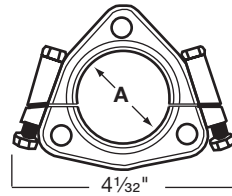
Flange No.	A	B	C
36130	2½	3 ¹¹ / ₃₂	7/8
36131	2¼	3 ²⁷ / ₆₄	7/16 X 37/64§
36132	2	3 ¹ / ₁₆	7/16 X 37/64§

§ Oblong Holes

GENERAL INFORMATION

PASSENGER CAR

VOLKSWAGEN - AUDI SPLIT FLANGE

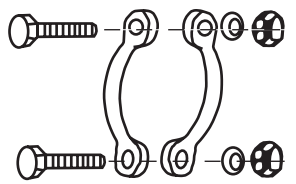


Flange No.	A
36133	2 ⁷ / ₁₆
36134	1 ⁷ / ₈

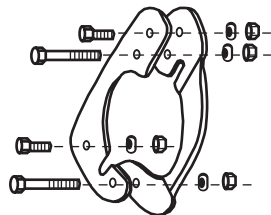
LIGHT TRUCK

SPLIT CONVERTER FLANGE

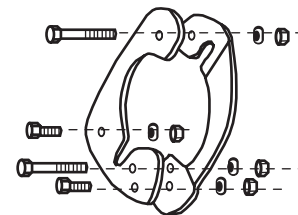
Split design allows the old worn-out flange to be replaced without damaging or cutting the catalytic converter. Low installation time - no welding required. Provides solid support for the entire exhaust system. Five popular sizes.



31871 (2½" - 2½")
31884 (1¾" - 2")
31966 (2" - 2¼")



31901
(1986-80 General Motors)



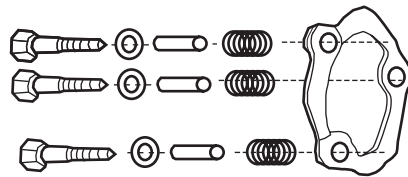
31925
(1987-82 General Motors)

MUFFLER SPECS.

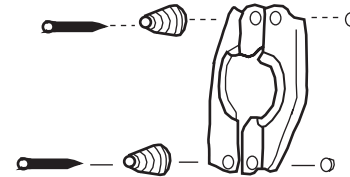
OPTIONAL MUFFLERS

SPLIT EXHAUST PIPE FLANGES

Split design allows the burned out flange to be replaced without removing the exhaust pipe. Saves installation time.



31902 (2½")
(1987-75 General Motors)

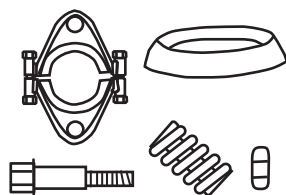


31953 (1⁷/₈")
(Chrysler w/o Turbo)

ACCESSORIES

FOOTNOTES

FLANGE MOUNTING KIT



36128 1994-89 Taurus SHO, 3.0L
1994-86 Taurus, 3.0L
1994-91 Taurus Police Sedan, 3.8L
1994-86 Sable, 3.0L

35455 1985-83 Escort, Lynx, 1.6L
1990-85 Escort, Lynx, 1.9L
1990-86 Sable, Taurus, 2.5L
1991-82 Tempo, Topaz, 2.3L